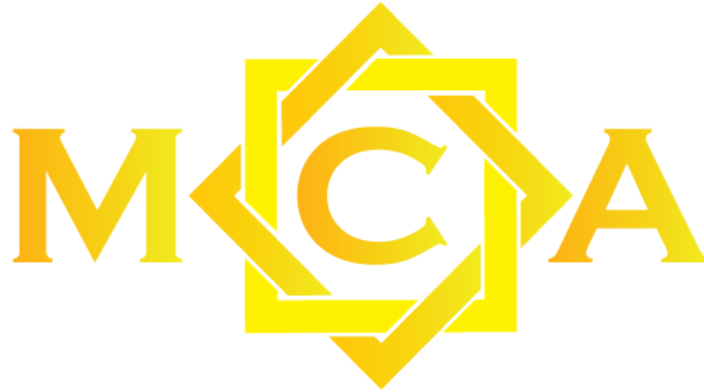


بِسْمِ اللَّهِ الرَّحْمَنِ الرَّحِيمِ



MCA FUNERAL HOME, FD2206

1755 Catherine Street, Santa Clara, CA 95050

Phone (408)709-4586 | Fax (408)709-4052

funeral@mcabayarea.org

<http://www.mcabayarea.org/funeral>

Syeda A Iqbal, Funeral Director FDR 4378

syeda.iqbal@mcabayarea.org

General Price List

THIS PRICE LIST IS EFFECTIVE AS OF **MARCH 1, 2021**

(Prices are subject to change without notice)

DISCLOSURES

Prior to drafting any contract for goods or services, the responsible party or the decedent's survivor who is handling the funeral arrangements is entitled to receive a copy of any pre-need agreement in the possession of the funeral establishment that has been signed and paid for, in full or in part, by or on behalf of the decedent.

I acknowledge receipt of a copy of the Consumer Guide for funeral and cemetery purchases.

I acknowledge receipt of the General Price List.

Authorized Signature: _____ Print: _____ Date: _____

**FOR MORE INFORMATION ON FUNERAL, CEMETERY AND CREMATION MATTERS
CONTACT:**

**Department of Consumer Affairs, Cemetery and Funeral Bureau
1625 North Market Blvd., Suite S208, Sacramento, CA 95834(916) 574-7870**

www.cfb.ca.gov



MCA FUNERAL HOME

License # FD2206

<http://www.mcabayarea.org/funeral/>

1755 Catherine Street,
Santa Clara, CA 95050
Phone (408) 709-4586
Fax (408) 709 4052
funeral@mcabayarea.org

PAYMENT TERMS

OUR POLICY REQUIRES 100% OF THE FUNERAL EXPENSES TO BE PAID IN FULL AT THE TIME OF ARRANGEMENT CONFERENCE

| | | |
|------------|--|----------------|
| 1.0 | BASIC SERVICES OF FUNERAL DIRECTOR, STAFF, and OVERHEAD | \$1,050 |
| 1.1 | This includes services of funeral directors and staff to respond to initial requests for service; arrangement conference with the family or responsible party; arrangement of a funeral; preparation and filing of necessary authorizations and permits; recording vital statistics (Disposition of Remains & Death certificate) coordinating service plans with cemetery; sheltering of the deceased. | \$1,050 |
| | *This is our basic services and overhead which will be added to the total cost of the funeral arrangements you select. | |

| | | |
|------------|---|------------------|
| 2.0 | GOVERNMENT FEE AND PERMIT COST | At Cost |
| 2.1 | Permit of Disposition (Burial Permit issued by the County) | \$12 |
| 2.2 | Certified copies of Death Certificate (price varies per County) | \$21-\$25 |
| 2.3 | Coroner's fee (varies by County) | At Cost |

| | | |
|------------|---|-------------------------|
| 3.0 | TRANSPORTATION | |
| 3.1 | Transfer of remains into our care, (M-F 8:00 am – 5:00 pm) within 30 mile radius. | \$400 |
| 3.2 | Removal and transport from Northern California Counties other than Santa Clara, Alameda, San Francisco, and San Mateo Counties. | \$400 + \$3/mile |
| 3.3 | Transfer after business hours including weekends and National holidays | \$500 |
| 3.4 | Transfer to or from Airport (San Francisco, Oakland & San Jose Airports only) | \$400 |
| 3.5 | Transport to Five Pillars Farm (M-F 8:00 am – 5:00 pm) or other cemetery within 30 mile | \$350 |
| 3.6 | Service Van-within 30 miles | \$75 |



MCA FUNERAL HOME

License # FD2206

<http://www.mcabayarea.org/funeral/>

1755 Catherine Street,
Santa Clara, CA 95050
Phone (408) 709-4586
Fax (408) 709 4052
funeral@mcabayarea.org

| 4.0 OTHER PREPARATION OF THE BODY AND OTHER CARE OF THE DECEASED | | |
|--|--|-------|
| 4.1 | Washing(Ghusl) and shrouding (Kafan) *Female decedents are taken care of by Muslim female staff | \$500 |
| 4.2 | Preparation & Disinfection of un-embalmed Autopsied remains-for viewing Post | \$475 |
| 4.3 | Autopsy preparation for religious washing | \$300 |
| 4.4 | Preparation & Disinfection of un-embalmed remains-for viewing | \$300 |
| 4.5 | Retrieval and handling of Autopsied remains (Coroner's case) | \$300 |
| 4.6 | Refrigeration of remains, (required if burial not within 24 hours) for up to 72 hours | \$150 |
| 4.7 | Refrigeration, daily charge after the first 72 hours | \$75 |

| 5.0 FACILITIES and SERVICES | | |
|-----------------------------|---|-------|
| 5.1 | Use of facilities for additional viewing or visitation (per two hours), this includes a staff member who will be present Monday-Friday, 9am-5pm | \$500 |
| 5.2 | Use of facility for washing, shrouding and viewing by immediate family | \$775 |
| 5.3 | Use of facilities & staff-for viewing | \$500 |
| 5.4 | Use of facilities & staff for funeral rituals | \$600 |
| 5.5 | Additional charge for Funeral service on weekends/holidays until 5pm | \$500 |
| 5.6 | Hourly overtime charge after 4 hours or after 5 pm (per Hour) | \$200 |
| 5.7 | Use of equipment & staff for graveside service | \$500 |
| 5.8 | Coordinating with cemetery for burial arrangements | \$500 |

EMBALMING-NOT OFFERED

The law does not require embalming. However, a funeral establishment must refrigerate an unembalmed body in its possession if burial or cremation does not take place within 24 hours.

Embalming may be necessary, however, if you select certain funeral arrangements, such as a funeral with viewing. If you do not want embalming, you usually have the right to choose an arrangement that does not require you to pay for it, such as a direct cremation or immediate burial. Instances where embalming is required are such as where the remains are to be transferred out of the state or out of the country. Embalming is a chemical process which provides temporary preservation of the body and helps eliminate health hazards.



MCA FUNERAL HOME

License # FD2206

<http://www.mcabayarea.org/funeral/>

1755 Catherine Street,
Santa Clara, CA 95050
Phone (408) 709-4586
Fax (408) 709 4052
funeral@mcabayarea.org

Casket Price List \$95-350

(Prices effective January 1,2021 and subject to change without notice)

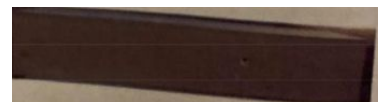
“THERE IS NO EVIDENCE THAT ANY CASKET REPRESENTED AS HAVING PROTECTIVE FEATURES, WHICH MAY INCLUDE A GASKET, WILL PRESERVE HUMAN REMAINS.”

| 6.0 ALTERNATE CONTAINER | | |
|-------------------------|---|-------|
| 6.1 | Alternative Container: Cardboard (Double wall corrugated Bottom and Single Wall Corrugated) – No Interior | \$95 |
| 6.2 | Alternative Container: Flat Gray Fiber Wood– No Interior | \$350 |

Alternative Container: Cardboard \$95



Alternative Container: Fiber Wood \$350





MCA FUNERAL HOME

License # FD2206

<http://www.mcabayarea.org/funeral/>

1755 Catherine Street,
Santa Clara, CA 95050
Phone (408) 709-4586
Fax (408) 709 4052
funeral@mcabayarea.org

FUNERAL SERVICE PACKAGES

Package Price Includes all Services Listed Under the Package.

| | | |
|-----------|---|----------------|
| P1 | STANDARD BURIAL PACKAGE | \$1,500 |
| 1.0 | BASIC SERVICES OF FUNERAL DIRECTOR, STAFF, and OVERHEAD | \$1,050 |
| 2.0 | GOVERNMENT AND PERMIT FEE | At Cost |
| 3.1 | Transfer of remains into our care, (M-F 8:00 am – 5:00 pm) within 30 mile radius. | \$400 |
| 3.5 | Transport to Five Pillars Farm (M-F 8:00 am – 5:00 pm) or other cemetery within 30 mile | \$350 |
| 4.6 | Refrigeration of remains, (required if burial not within 24 hours) for up to 72 hours | \$150 |
| 6.1 | Cardboard (Double wall corrugated Bottom and Single Wall Corrugated) – No Interior | \$95 |

| | | |
|-------------|---|----------------|
| P1-C | STANDARD BURIAL PACKAGE PLUS COVID-19 SERVICES | \$2,250 |
| P1 | STANDARD BURIAL PACKAGE | \$1,500 |
| 7.0 | Use of external facility for washing and shrouding | \$350 |
| 7.1 | Refrigeration of remains per night | \$100 |
| 7.2 | Washing(Ghusl) and shrouding (Kafan) *Family members are required for help specially in case of female | \$300 |

| | | |
|-----------|--|----------------|
| P2 | ISLAMIC BURIAL PACKAGE | \$1,900 |
| P1 | STANDARD BURIAL PACKAGE | \$1,500 |
| 4.1 | Washing(Ghusl) and shrouding (Kafan) *Female decedents are taken care of by Muslim female staff | \$500 |
| 5.2 | Use of facility for washing, shrouding and viewing by immediate family | \$775 |
| 5.4 | Use of facilities & staff for funeral rituals | \$600 |



FUNERAL SERVICE PACKAGES

Package Price Includes all Services Listed Under the Package.

| | | |
|-----------|---|----------------|
| P3 | FORWARDING REMAINS TO ANOTHER FUNERAL HOME | \$1,450 |
| 1.0 | BASIC SERVICES OF FUNERAL DIRECTOR, STAFF, and OVERHEAD | \$1,050 |
| 2.0 | GOVERNMENT AND PERMIT FEE | At Cost |
| 3.1 | Transfer of remains into our care, (M–F 8:00 am – 5:00 pm) within 30 mile radius. | \$400 |
| 4.6 | Refrigeration of remains, (required if burial not within 24 hours) for up to 72 hours | \$150 |

| | | |
|-----------|--|----------------|
| P4 | RECEIVING REMAINS FROM ANOTHER FUNERAL HOME | \$1,750 |
| 1.0 | BASIC SERVICES OF FUNERAL DIRECTOR, STAFF, and OVERHEAD | \$1,050 |
| 2.0 | GOVERNMENT AND PERMIT FEE | At Cost |
| 3.5 | Transport to Five Pillars Farm (M–F 8:00 am – 5:00 pm) or other cemetery within 30 mile | \$350 |
| 4.1 | Washing(Ghusl) and shrouding (Kafan) *Female decedents are taken care of by Muslim female staff | \$500 |
| 4.6 | Refrigeration of remains, (required if burial not within 24 hours) for up to 72 hours | \$150 |
| 5.2 | Use of facility for washing, shrouding and viewing by immediate family | \$775 |
| 5.4 | Use of facilities & staff for funeral ceremony | \$600 |
| 6.1 | Cardboard (Double wall corrugated Bottom and Single Wall Corrugated) – No Interior | \$95 |

| | | |
|-----------|---|----------------|
| P5 | CHILD BURIAL PACKAGE UNDER 2 YEARS | \$1,000 |
| 1.0 | BASIC SERVICES OF FUNERAL DIRECTOR, STAFF, and OVERHEAD | \$1,050 |
| 2.0 | GOVERNMENT AND PERMIT FEE | At Cost |
| 3.1 | Transfer of remains into our care, (M–F 8:00 am – 5:00 pm) within 30 mile radius. | \$400 |
| 4.6 | Refrigeration of remains, (required if burial not within 24 hours) for up to 72 hours | \$150 |



MCA FUNERAL HOME

License # FD2206

<http://www.mcabayarea.org/funeral/>

1755 Catherine Street,
Santa Clara, CA 95050
Phone (408) 709-4586
Fax (408) 709 4052
funeral@mcabayarea.org

BURIAL CEMETERY ARRANGEMENT

MCA Funeral Home has an agreement with Five Pillars Farms Cemetery for Burial Arrangement.

Cemetery Location 1761 Laughlin Rd, Livermore, CA 94551

Five Pillars Farm Inc is a separate entity NOT associated with the MCA Funeral Home.

| FP | CEMETERY CHARGES | |
|------|---|---------|
| FP.1 | Grave Site | \$2,000 |
| FP.2 | Burial Service Monday to Friday (includes Endowment fee, concrete liner, head stone and border Installation and opening/closing cost) | \$3,900 |
| FP.3 | Child Burial Package upto 34" | \$2,500 |
| FP.4 | *Additional Charges for Weekend & Holiday | \$500 |

Please note that all associated costs with the burial service must be paid in advance or prior to the starting the burial process. Also please note that all three copies of Burial Permit issued by the County accompany the remains. without which the cemetery will not be able to render the burial service

Additionally. Five Pillars Farm Inc. reserves the right to deny services as deemed necessary.

Normally burial services are performed between the time frame starting half an hour after the Zohar (midday) prayer until 5:00 PM in summer and until 4:00 PM in winter. Burial timing must be scheduled by calling the phone numbers given on this letter at least five hours in advance prior to the actual time being requested for burial. We request all concerned Masjids, Islamic Centers, and organizations to disseminate this circular among their community members. We look forward for your cooperation and assistance in running daily operations of the cemetery smoothly and efficiently by abiding the cemetery and state regulations

Sincerely

Ahmed K Hashmi
Managing Director

Five Pillars Farm Inc

39675 Cedar Blvd. Ste: 1001A,

Newark, CA 94560

Ph:(510) 517-8397

Fax: (510) 793-2598

Email:info@5pillarscemetery.com

<https://5pillarscemetery.com/>



MCA FUNERAL HOME

License # FD2206

<http://www.mcabayarea.org/funeral/>

1755 Catherine Street,
Santa Clara, CA 95050
Phone (408) 709-4586
Fax (408) 709 4052
funeral@mcabayarea.org

FUNERAL PROCESS

The MCA Funeral Home was established as a Licensed Funeral Facility to facilitate Islamic practices of funeral services and burials. In order to comply with State regulations and ease the process of obtaining a death certificate it is imperative to complete the paperwork before MCA Funeral Home can initiate the process of

- Transportation of the body to MCA Funeral Home.
- Wash the body according to Islamic rites.
- Shrouding (kafan) and casket.
- Arrange congregational funeral prayer.
- Transport of body to the final resting place.

In case of the imminent event, the person with the right to control disposition of remains can contact MCA Funeral Home by submitting a form on <https://mcabayarea.org/funeral/> or calling @ **408-709-4586**. MCA Funeral Home staff will guide you through the process.

| FORM GUIDELINES | | |
|-----------------|--|---|
| 1 | Authorization for Release | This is to be signed by the primary (and if any secondary) authorizer to allow the MCA Funeral Home access to the decedent remains. |
| 2 | Death Certificate Info | Provide an address where the certified death certificate will be mailed. |
| 3 | Death Certificate Worksheet | This is an official document used for the Death Certificate. Please ensure all information provided is complete and correct. |
| 4 | Authorization to Decline Embalming | Islamic law prohibits embalming or enhancing the body of the deceased in any way. Therefore, MCA Funeral Home does not offer this service. |
| 5 | Disclosure of Preneed Funeral Agreement | If there is any arrangement, please contact the preneed holder. MCA Funeral Home does not offer any pre-need arrangements. |
| 6 | Disclosure for Ghusl-Ritual Wash | If you are providing the names of family members that will perform this ritual of washing, ensure they are experienced and of the same sex as the deceased. |
| 7 | MCA Funeral Home Contract | Payment worksheet. Please refer to Consumer Guide and General Price List for details. |

The Janaza prayer is performed right after the Dhuhr prayer at Masjid Al-Noor and the Ghusl (washing) is performed an hour before the Janaza prayer. If completed paperwork is submitted before 8:00AM, typically the burial is performed the same day after Dhuhr Salat. Otherwise, it will be set for the next day.